

NetLogger

NetLogger is a logging program that uses the internet to transmit check-in information to other users of NetLogger. Participants that have checked into the net with NetLogger running will receive updated information every 20 to 45 seconds.

NetLogger also has features designed to make check-ins easier. For instance, if you use the QRZ XML service, information like name, city and state can be filled-in for you automatically.

Other features of NetLogger include support for importing/exporting data in ADIF and CSV format, a built in contact database that supports complex searching, automatic entry of UTC, date and time when logging contacts, support for LoTW and eQSL uploads, plus many other features

1. Download NetLogger

The NetLogger program is free for all amateurs to use. It is a very good program for running, logging, and tracking net operations. If you feel so inclined you might consider clicking the donate button and dropping them \$5 as a way of saying thanks.

Here is the link to download NetLogger: <http://netlogger.org/>

Download and install Netlogger.

2. Start NetLogger

The first time you start NetLogger you will need to enter some basic information like your call sign and name (optional). Click done when finished.

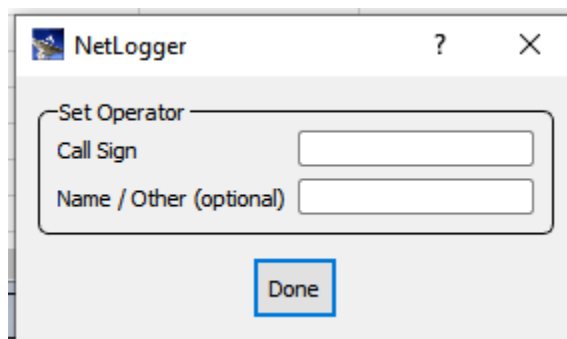


Figure 1

Next is the NetLogger setup screen. First un-check all the boxes in the eQSL Account Setup and the LoTW Account Setup sections.

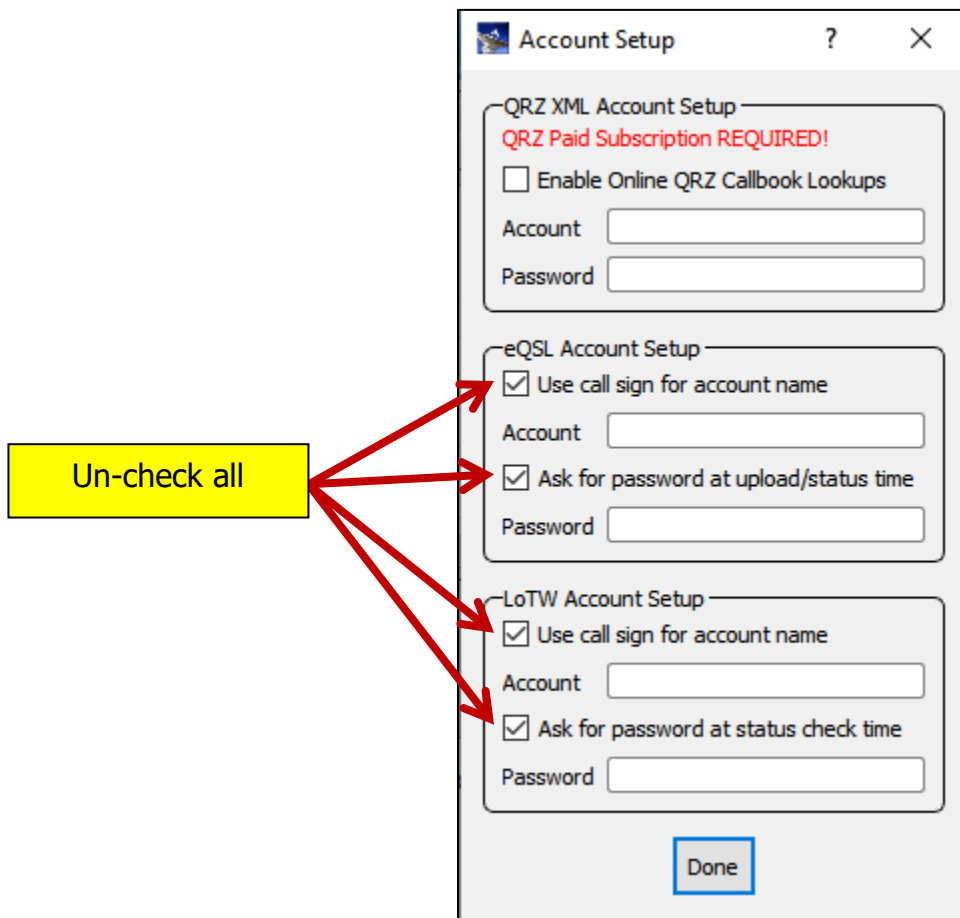


Figure 2

If you have a QRZ XML account check the Enable Online QRZ Callbook Lookups box and enter your account information. It is OK if you don't have a QRZ account. It's just that some of the information on the main window may not be populated correctly. Call Signs will appear though.

Click done when finished.

3. Main NetLogger screen

Figure 3 is the main NetLogger screen. Here you will see call signs populated as they are entered.

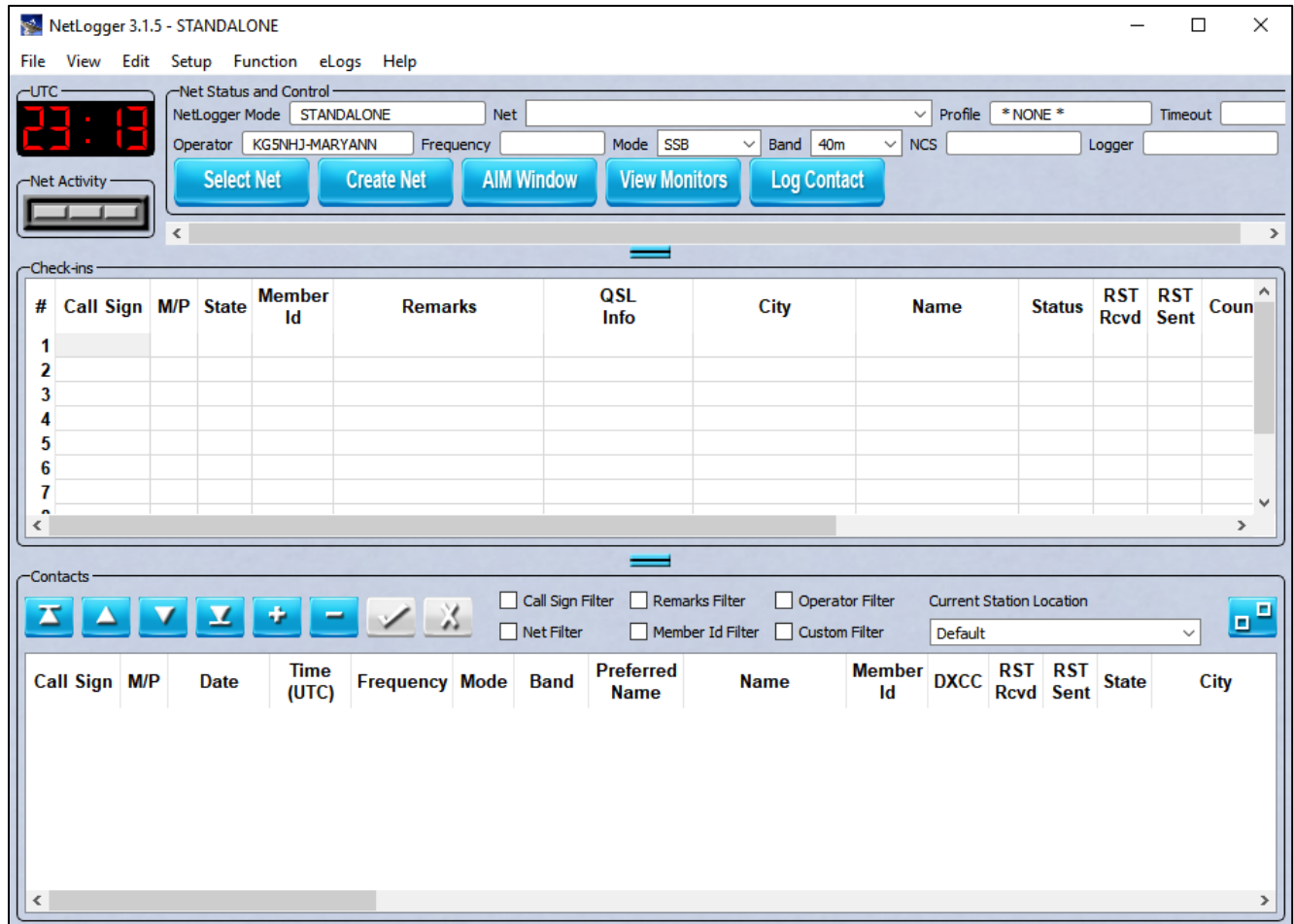
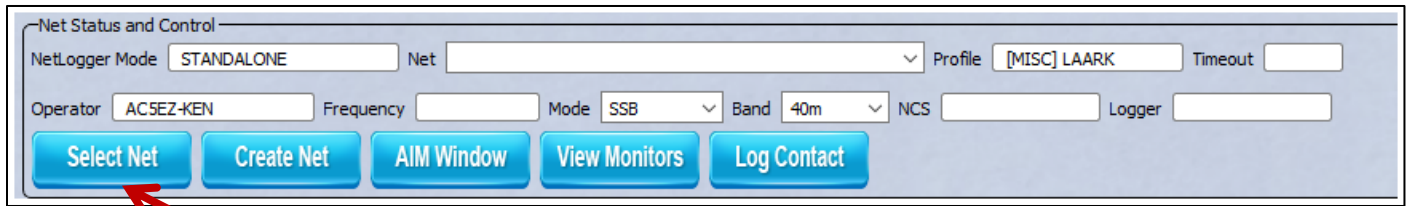


Figure 3

Right now we are only concerned with the upper section.

4. Choosing a net



Click on the blue
"Select Net"

Figure 4

Net In Progress window will open

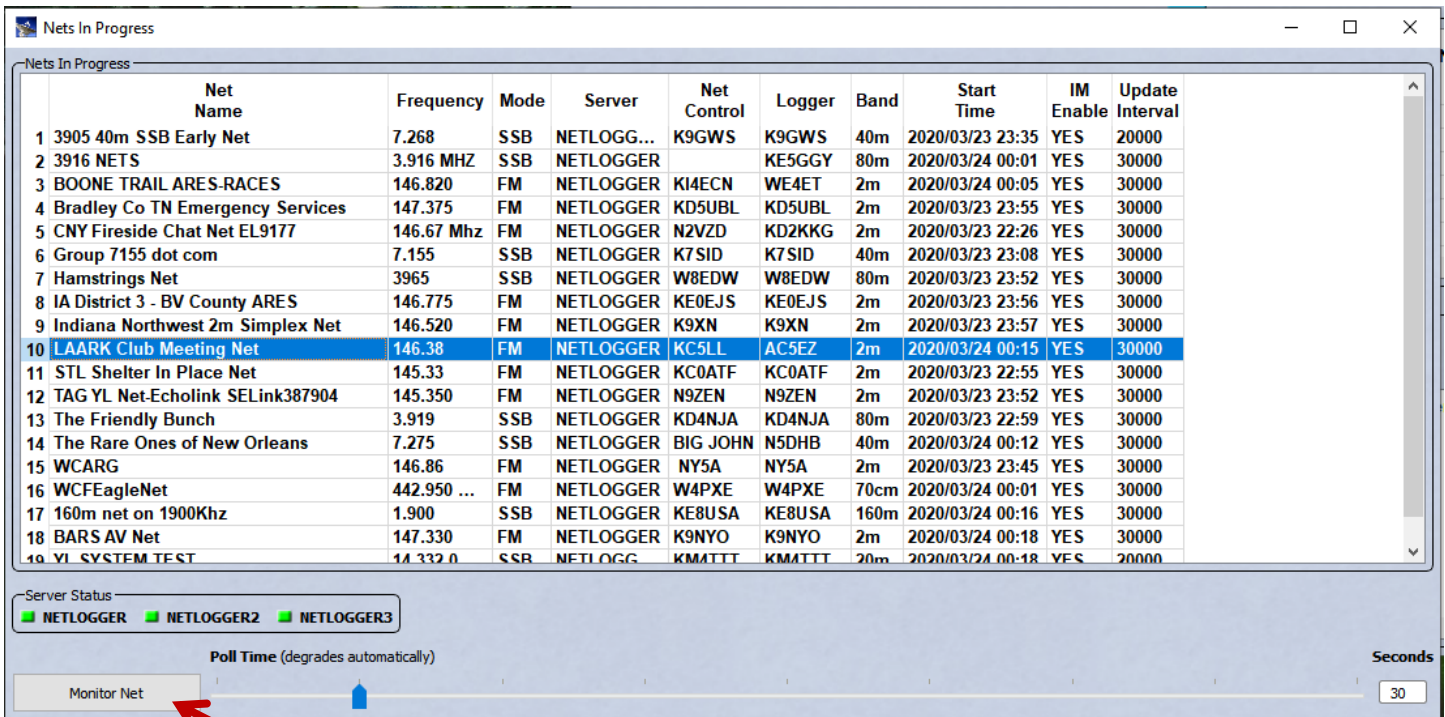


Figure 5

Click "Monitor Net" button

Scroll through the list until you find " **LAARK Club Meeting Net**". Click the "Monitor Net" to select. If you load NetLogger.exe before the meeting starts you may not see this file. That's OK it will be there 30 minutes before the meeting starts.

Your now back at the main NetLogger screen.

5. Selecting The AIM Window

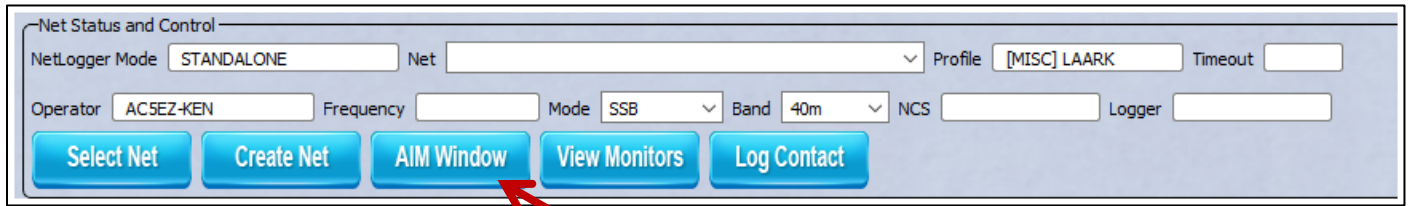


Figure 6

AIM-Almost Instant
Messaging Window

The AIM window is like a text message system. Anything you type will be seen by everyone that is currently running NetLogger and has checked into the net.

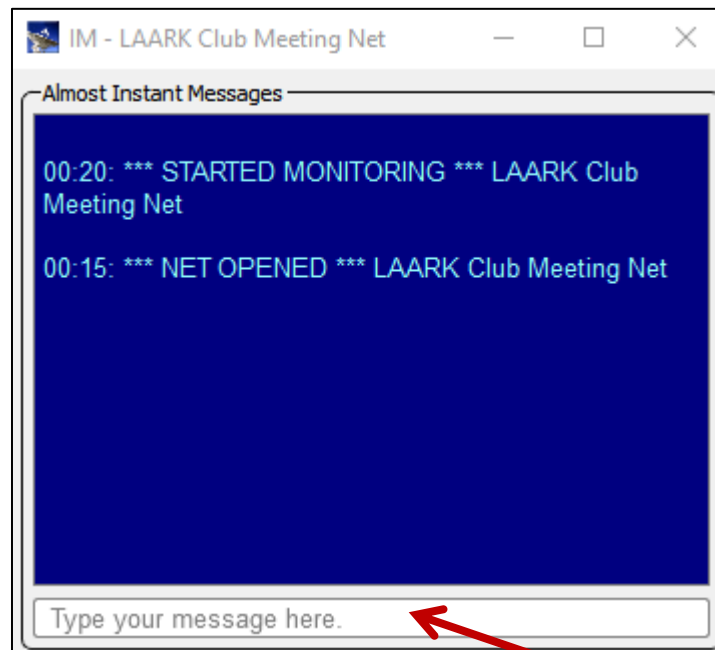


Figure 7

Type your
message here.

The AIM message system takes about 30 to 45 seconds to be published so don't repeat your message thinking it did not go. Just wait it will appear. We might use the AIM window if the NC asks for comments or approval/dis-approval on any issue. You will enter your information and all will see it.

6. The View Monitors Window

This window shows users that have selected the "LAARK Club Meeting Net". Once a user's call sign appears in this window the ANC will enter that call sign into the net check-in window and the call sign will appear in the main window. You will see all members that have checked in to the meeting.

7. Exiting NetLogger



Figure 8

Click Stop
Monitoring

Once the meeting is adjourned you can close NetLogger. Simply click on Stop Monitoring button.

That's it.